

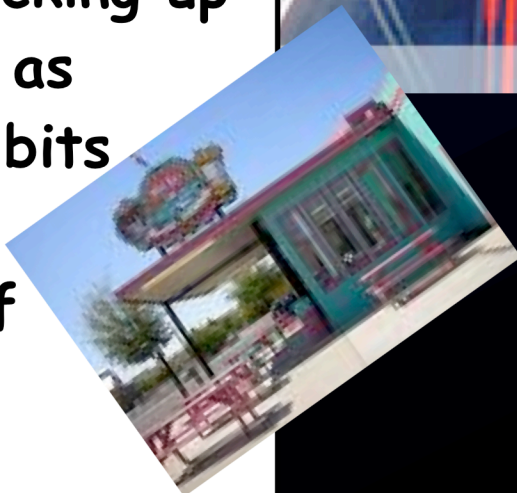


Route 66 is 2448 miles long.



YOU CAN FIND ALL SORTS OF FACTS AT THIS WEBSITE:
<http://www.historic66.com/more/facts/>

Route 66 was commissioned in 1926, picking up as many as possible bits and pieces of existing road.



In 1926 only 800 miles of Route 66 were paved. Only in 1937 Route 66 got paved end-to-end.

